

PRODUCT DESCRIPTION

- Cover dedicated to the STEP extrusion

Fill empty fields

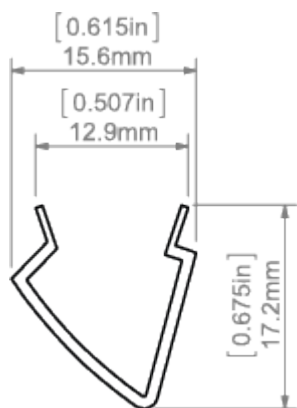
Product nr.	
Fixture type	
Company	
Job name	
Date	



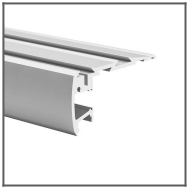
TECHNICAL SPECIFICATION

Material	PC
Available length	1000 mm, 2000 mm, 3000 mm
UV resistance	increased

TECHNICAL DRAWING



RELATED PROFILES



STEP Profile
Ref: 18042