

PRODUCT DESCRIPTION

Fastener with increased load capacity, used for hanging fixtures on a steel cable. In addition, it can be used as a connection for one pole of electricity as the [steel cable with Cu core](#) can be conductive. Mounted in the guide (small lock) of the selected profile. The power cable can be inserted through the hole drilled in the extrusion and further through the channel in the fastener

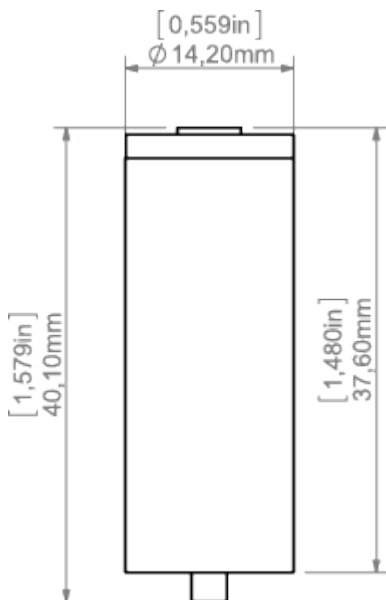
Fill empty fields

Product nr.	
Fixture type	
Company	
Job name	
Date	

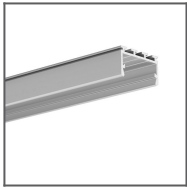


TECHNICAL SPECIFICATION

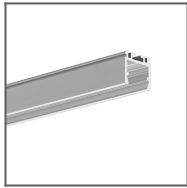
TECHNICAL DRAWING



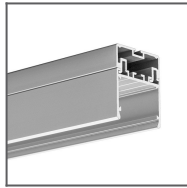
RELATED PROFILES



GIZA-LL profile
Ref: C0758



OPK-4 Profile
Ref: C0370



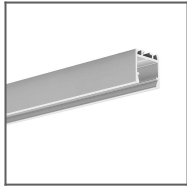
3035 Profile
Ref: 18039



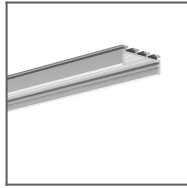
JAZ Profile
Ref: B8547



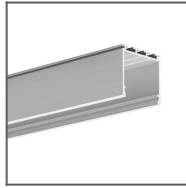
OLEK Profile
Ref: B8505



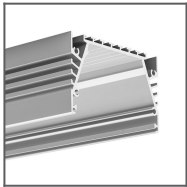
PDS-ZM Profile
Ref: B7696



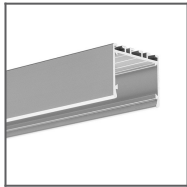
GIZA Profile
Ref: B5556



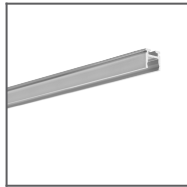
LIPOD Profile
Ref: B5554



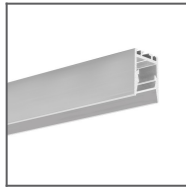
SEPOD Profile
Ref: B6593



3035-O Profile
Ref: B8441



PIKO-ZM Profile
Ref: C1168



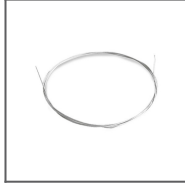
PDS-ZMG Profile
Ref: C1418

RELATED PRODUCTS

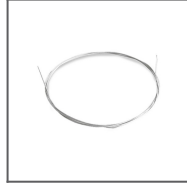
ACCESSORIES



Isolated CU cable
FI-1.35 mm
Ref: 70310



Steel cable with
Cu FI 0.95 mm
core
Ref: 70240



Steel wire FI-1 1m
Ref: 1397