

## PRODUCT DESCRIPTION

End cap 3035 made of ABS in aluminum color (RAL7035) press-fitted, with elements protecting the 3035 assembly from unfastening. This type of locking protection can be used only in the 3035 lighting fixtures not longer than 70cm.

- High resistance to damage
- Will not corrode
- Simple assembly
- Aesthetically finishing the extrusion

Fill empty fields

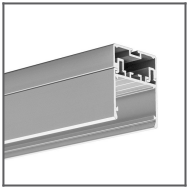
Product nr.	
Fixture type	
Company	
Job name	
Date	



## TECHNICAL SPECIFICATION

Material	ABS
Colour	grey

RELATED PROFILES



3035 Profile  
Ref: 18039