

**PRODUCT DESCRIPTION**

Transverse conductive fastener 49, designed for mounting lighting fixtures in brick walls. It has an anchor for brick walls, a connection for one pole of electricity and a transverse hole for the FI-3 ROD. Additionally, it comes with the 49 masking cover to conceal ragged edges of the hole

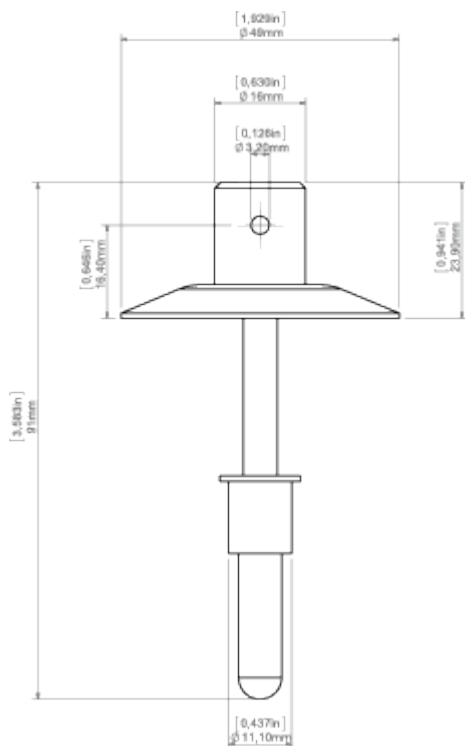
Fill empty fields

Product nr.	
Fixture type	
Company	
Job name	
Date	



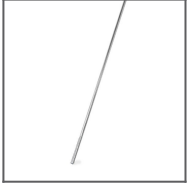
**TECHNICAL SPECIFICATION**

**TECHNICAL DRAWING**

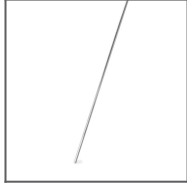


RELATED PRODUCTS

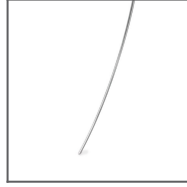
ACCESSORIES



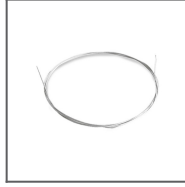
100 PUSZ brass  
chrome Rod 1 m  
Ref: 42518



Brass chrome FI-3  
Rod 1m  
Ref: 42501



Steel FI-3 Rod 53  
cm  
Ref: 1528



Steel wire FI-1 1m  
Ref: 1397